



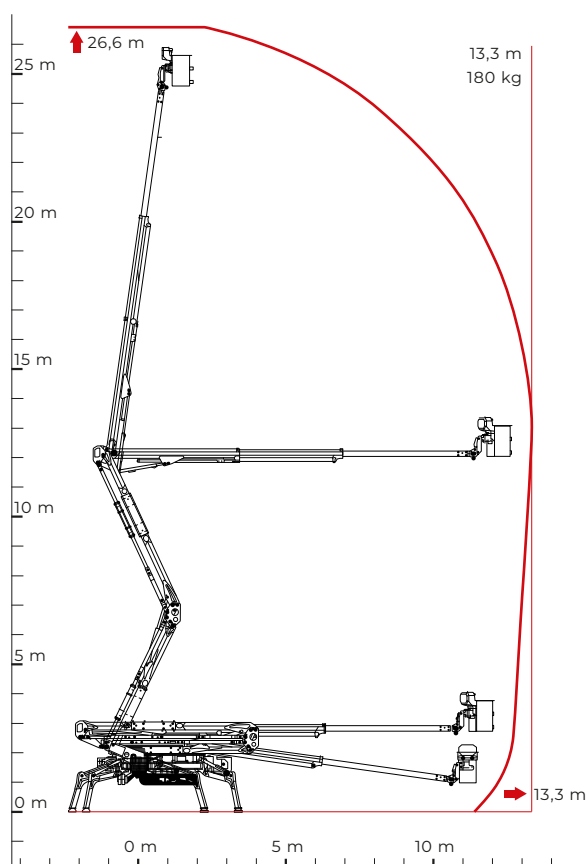
TECHNICAL SHEET

PERFORMANCE AND DIMENSIONS

Main features

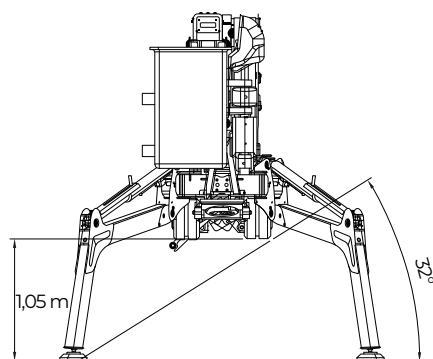
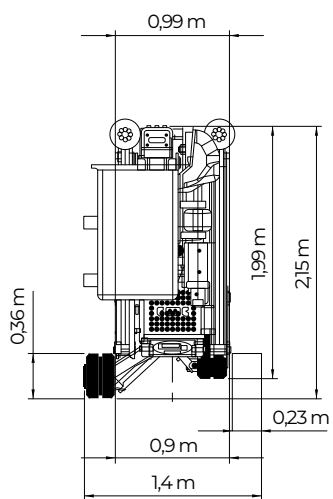
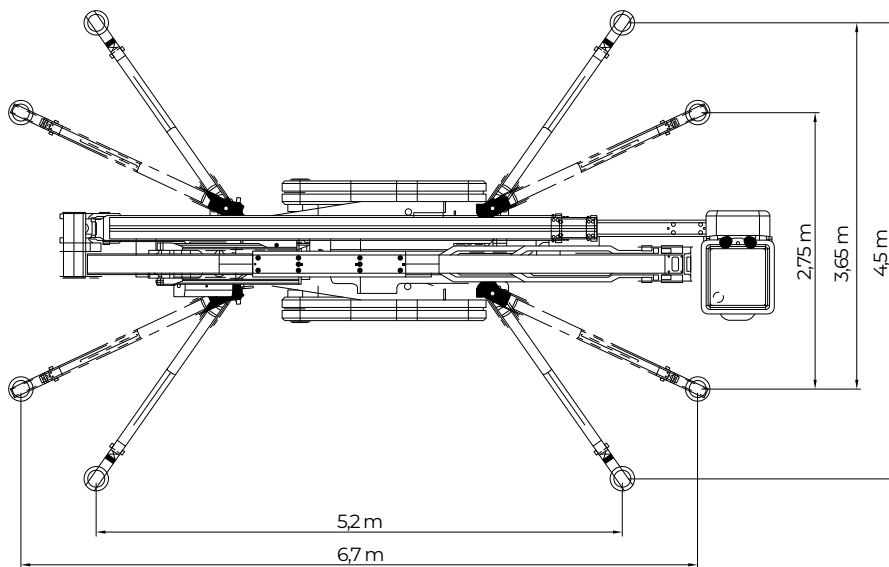
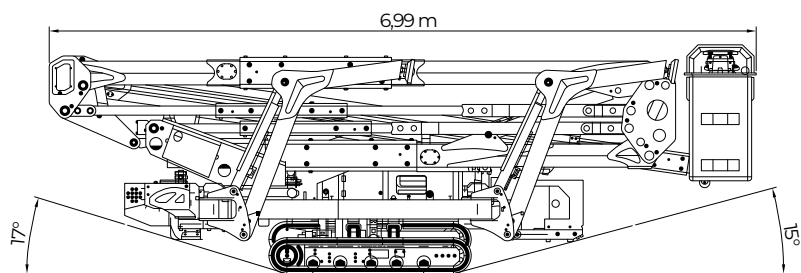
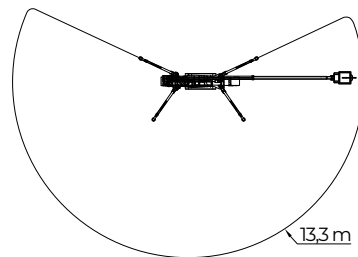
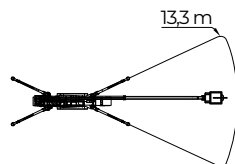
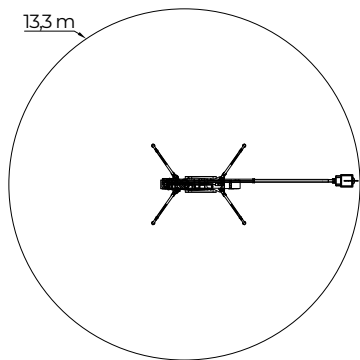
Double pantograph geometric platform, with the widest outreach without limiting devices in its category. Electrically isolated up to 46kV, it allows it to work safely on or near high voltage lines. With its 27 meters of working height, its three areas of stabilization, the automatic leveling of the stabilizers, is able to operate at its best in any condition.

Max. working height	26,6 m
Max. outreach with 180 kg	13,3 m
Platform height	23,6 m
Max. load in basket	180 kg
Basket dimensions	0,6 x 0,6 x 1,1 m
Basket rotation	+90°
Turret rotation	+/- 200° (400° continuous)
Total weight	4680 Kg



C.M.C. s.r.l.
Via Bitritto, 119 - 70124 Bari - Italy
Tel. +39 080 532 66 06
cmclift.com - info@cmclift.com





PERFORMANCE	
Max. working height	26,6 m
Max. working outreach	13,3 m (with 180 kg)
Max. basket capacity	180 kg
Turret rotation	+/-200° (tot. 400°)
Basket rotation	+/-90°
Max. ramp attack slope (basket side) with tracks closed/opened	15°/7° - 14%/30,5%
Max. ramp attack slope (engine side) with tracks closed/opened	8°/17° - 10%/26%
Max. longitudinal slope to travel	19° - 34%
DIMENSIONS	
Total lenght with basket bracket rotated	6,99 m
Height in driving position (with tracks closed)	1,99 m
Height in driving position (with tracks opened)	2,15 m
Total width without basket	0,89 m
Outriggers plate Ø	0,24 m
Total weight (standard equipment)	4680 kg
BASKETS AVAILABLE	
One man fiberglass basket (L x W x H)	0,60x0,60x1,10
PRESSURES	
Max. pressure on the foot	N.D.
Max. pressure on the tracks	N.D.
Max. pressure in work with 4 outriggers opened	N.D.
Max. pressure in work with 4 outriggers closed	N.D.
Max. pressure in work with 2 outriggers opened and 2 outriggers closed	N.D.
TRAVEL SPEED (KM/H)**	
Kubota Z902	N.D.
Auxiliary electric engine 110/230 V*	N.D.
Full Lithium version 48 V*	N.D.
POWERS	
Standard engines	Kubota D902-E4B diesel engine, 16.1 kW (21.6 HP), 3200 rpm
*Options engines	Auxiliary electric engine 120 V - 1.6 kW
Fuel tank capacity	30 l
* Options - ** these data may vary depending on the accessories chosen	