



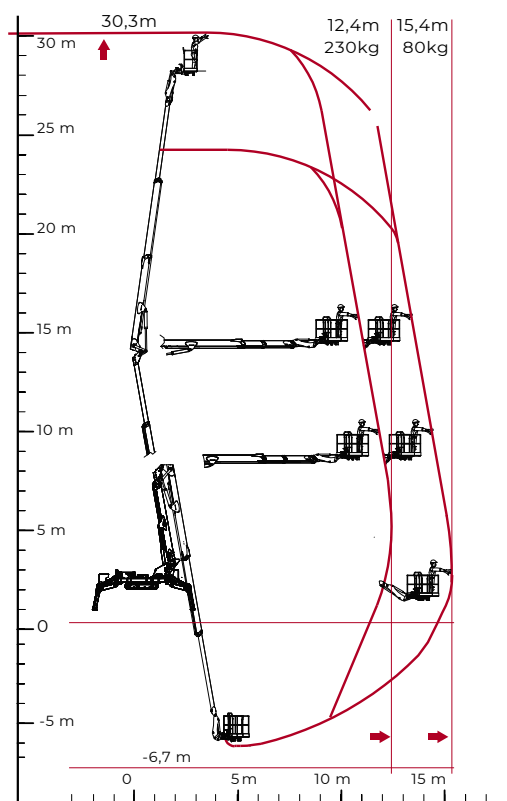
## TECHNICAL SHEET

### PERFORMANCE AND DIMENSIONS

#### Main features

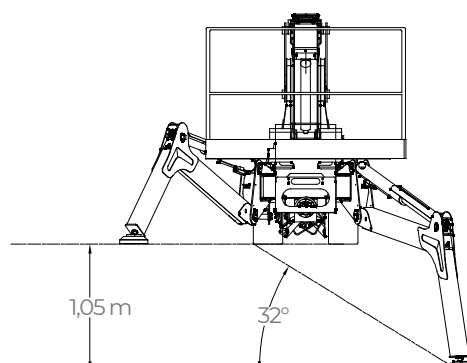
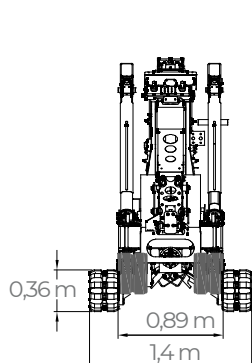
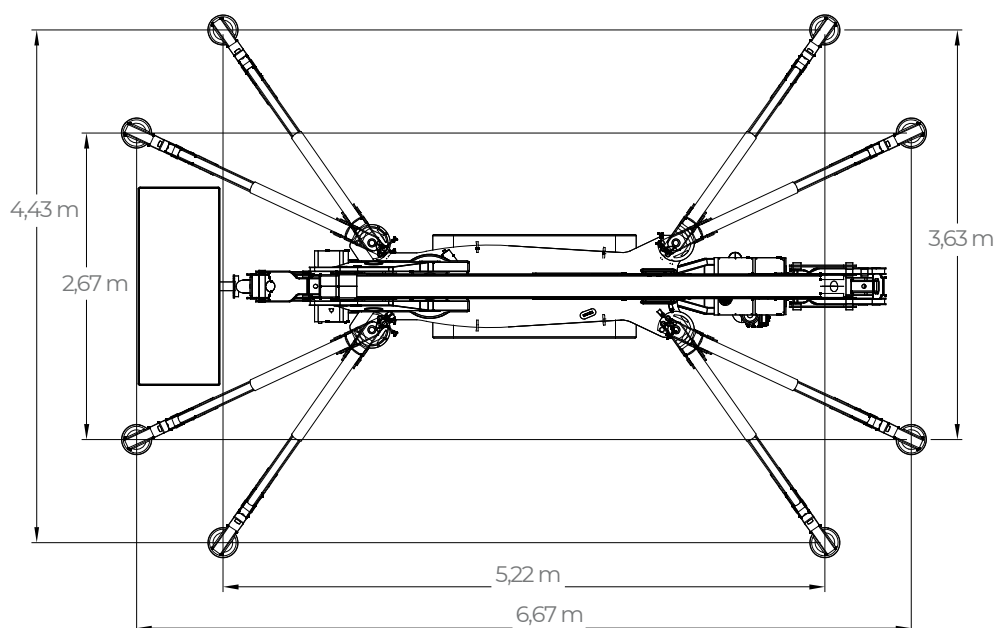
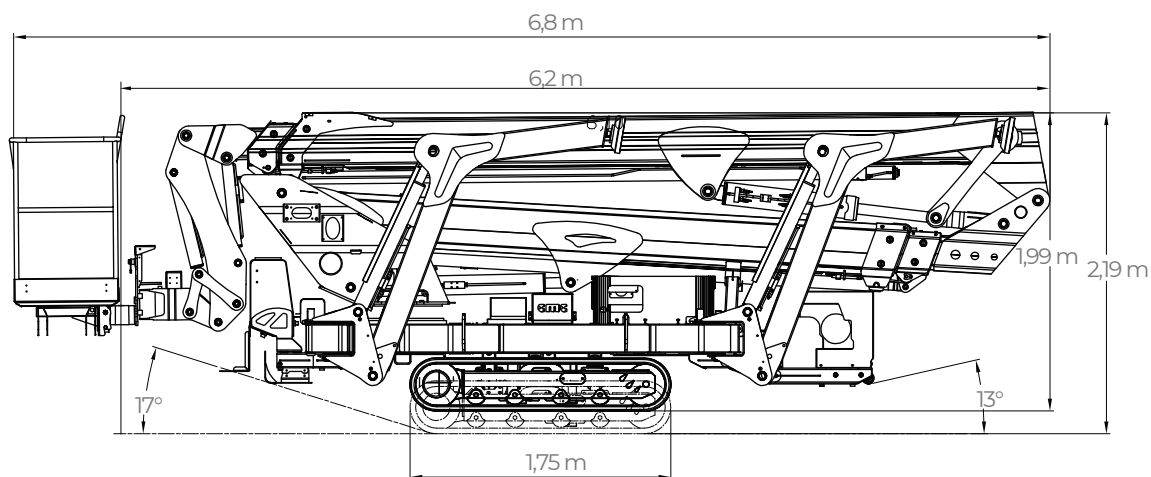
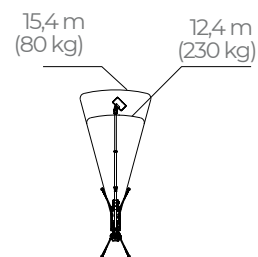
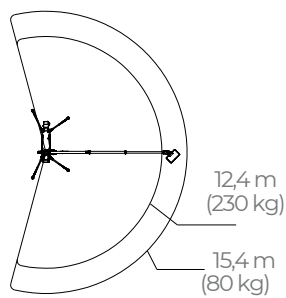
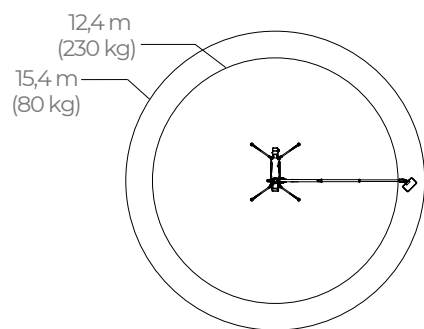
A bundle of power and technology capable of performing in any application. It has three stabilisation areas, two working areas and climbing outriggers for working on all types of terrain and reaching even the most difficult spots with its maximum working height of 30,3m, lateral outreach of 15,4m and the ability to work in negative down to -6.7m.

Max. working height	<b>30,3 m</b>
Possibility of working in negative	<b>-6,7 m</b>
Max. outreach with 80 kg	<b>15,4 m</b>
Platform height	<b>28,3 m</b>
Max. load in basket	<b>230 kg</b>
Basket dimensions	<b>1,7 x 0,7 x 1,1 m</b>
Basket rotation	<b>+/-90°</b>
Turret rotation	<b>+/- 200°(400° continuous)</b>
Total weight	<b>4285 Kg</b>



Via Bitritto, 119 - 70124 BARI - ITALY  
Tel. +39 080 532 66 06 - Fax +39 080 536 85 41  
[www.cmclift.com](http://www.cmclift.com) - [info@cmclift.com](mailto:info@cmclift.com)





<b>PERFORMANCE</b>	
Max. working height	30,30 m
Max. working outreach	15,40 m (with 80 kg)
Max. working outreach	12,40 m (with 230 kg)
Max. basket capacity	230 kg
Jib movement	+/- 90°
Turret rotation	+/-200° (tot. 400°)
Basket rotation	+/-90°
Max. ramp attack slope(basket side)with tracks closed/ opened	10°/17° - 18%/31%
Max. ramp attack slope (engine side) with tracks closed/ opened	7°/13° - 12%/23%
Max. longitudinal slope to travel	19° - 34%
<b>DIMENSIONS</b>	
Total length with two-men rotated basket**	6,80 m
Total lenght with basket bracket rotated	6,10 m
Height in driving position (with tracks closed)	1,99 m
Height in driving position (with tracks opened)	2,19 m
Total width without basket	0,90 m
Outriggers plate Ø	0,24 m
Total weight (standard equipment)	4285 kg
<b>BASKETS AVAILABLE</b>	
One man aluminum basket (L x W x H)	0,80x0,60x1,10 m
Two men aluminum basket (L x W x H) with quick release system and wheels	1,70x0,70x1,10 m
Two men aluminum basket (L x W x H)	1,20x0,70x1,10 m
*One man fiberglass basket (L x W x H)	0,80x0,60x1,10 m
*Two men fiberglass basket (L x W x H)	1,20x0,60x1,10 m
*Two men fiberglass basket (L x W x H)	1,40x0,60x1,10 m
<b>PRESSURES</b>	
Max. pressure on the foot	5,84 kg/cm <sup>2</sup>
Max. pressure on the tracks	0,28 kg/cm <sup>2</sup>
Max. pressure in work with 4 outriggers opened	146,00 kg/cm <sup>2</sup>
Max. pressure in work with 4 outriggers closed	213,00 kg/cm <sup>2</sup>
Max. pressure in work with 2 outriggers opened and 2 outriggers closed	172,00 kg/cm <sup>2</sup>

TRAVEL SPEED (KM/H)**	
Kubota Z902	Speed 1: 0,50 km/h   Speed 2: 1,13 km/h   Speed 3: 2,40 km/h
Auxiliary electric engine 110/230 V*	Speed 1: 0,36 km/h   Speed 2: 0,36 km/h   Speed 3: 0,61 km/h
Full Lithium version 48 V*	Speed 1: 0,37 km/h   Speed 2: 0,75 km/h   Speed 3: 1,57 km/h
POWERS	
Standard engines	Kubota D902-E4B diesel engine, 16.1 kW (21.6 HP), 3200 rpm
*Options engines	Auxiliary electric engine 110/230 V - 2.2 kW
	Auxiliary electric engine 380 V - 7.5 kW
	Full lithium version (G0901306 electric engine, 9 kW, 48 V + 200 Ah lithium batteries)
	Hybrid version (diesel engine + 200 Ah lithium batteries)
Fuel tank capacity	30 l
* Options	**with basket 1,40 x 0,70 x 1,10 m
** these data may vary depending on the accessories chosen	