



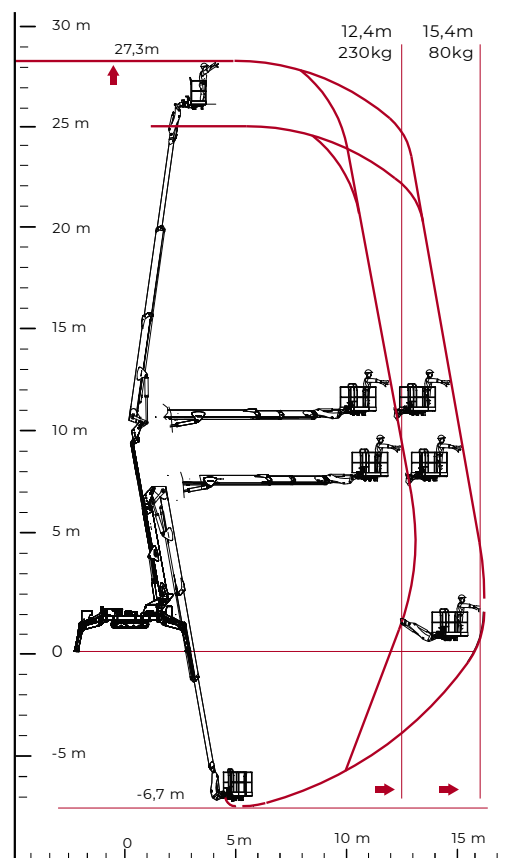
TECHNICAL SHEET

PERFORMANCE AND DIMENSIONS

Main features

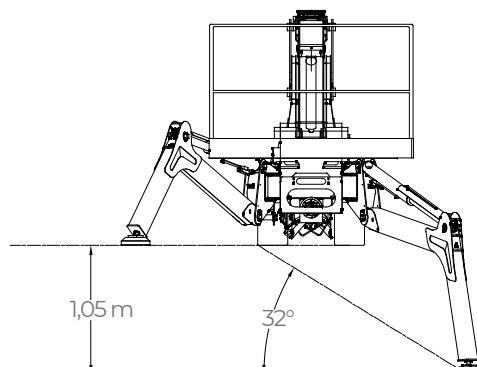
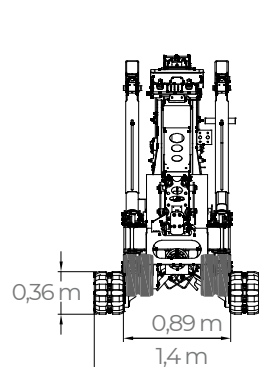
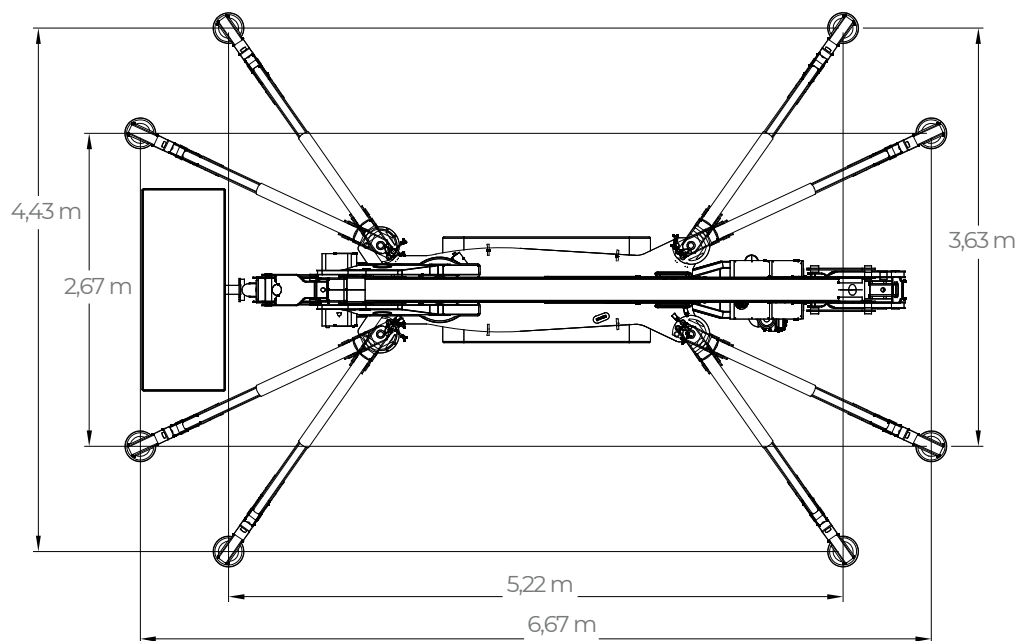
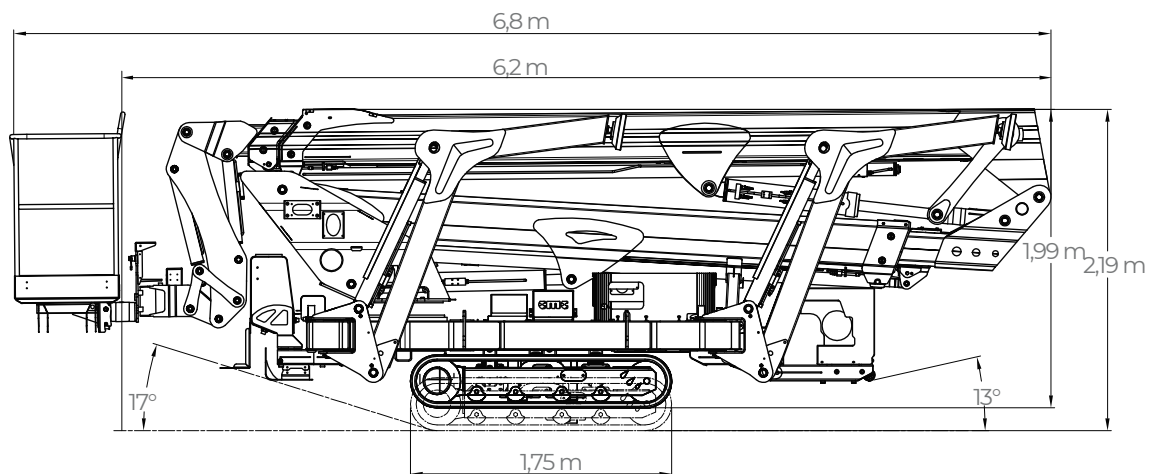
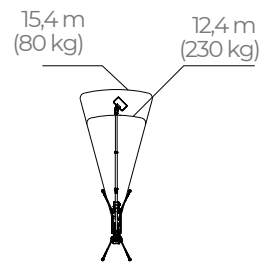
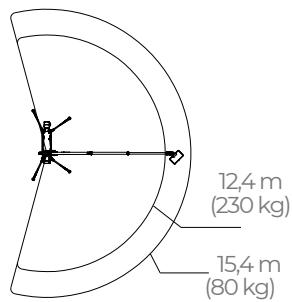
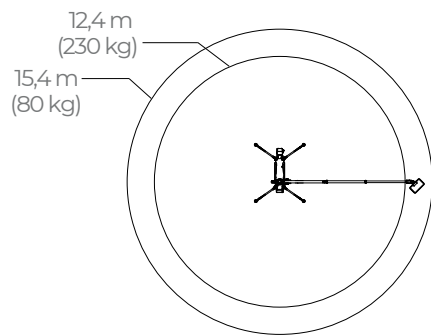
This platform has compact design and high-performance capabilities: 27,3m working height, 15,4m of horizontal reach and the ability to work in negative, down to -6.7m. With three stabilisation areas, it can perform a wide range of tasks with outstanding efficiency and reliability.

Max. working height	27,3 m
Possibility of working in negative	-6,7 m
Max. outreach with 80 kg	15,4 m
Platform height	25,3 m
Max. load in basket	230 kg
Basket dimensions	1,7 x 0,7 x 1,1 m
Basket rotation	+/-90°
Turret rotation	+/- 200° (400° continuous)
Total weight	4109 Kg



Via Bitritto, 119 - 70124 BARI - ITALY
Tel. +39 080 532 66 06 - Fax +39 080 536 85 41
www.cmclift.com - info@cmclift.com





PERFORMANCE	
Max. working height	27,30 m
Max. working outreach	15,40 m (with 80 kg)
Max. working outreach	12,40 m (with 230 kg)
Max. basket capacity	230 kg
Jib movement	+/- 90°
Turret rotation	+/-200° (tot. 400°)
Basket rotation	+/-90°
Max. ramp attack slope(basket side)with tracks closed/ opened	10°/17° - 18%/31%
Max. ramp attack slope (engine side) with tracks closed/ opened	7°/13° - 12%/23%
Max. longitudinal slope to travel	19° - 34%
DIMENSIONS	
Total length with two-men rotated basket**	6,80 m
Total lenght with basket bracket rotated	6,10 m
Height in driving position (with tracks closed)	1,99 m
Height in driving position (with tracks opened)	2,19 m
Total width without basket	0,90 m
Outriggers plate Ø	0,24 m
Total weight (standard equipment)	4109 kg
BASKETS AVAILABLE	
One man aluminum basket (L x W x H)	0,80x0,60x1,10 m
Two men aluminum basket (L x W x H) with quick release system and wheels	1,70x0,70x1,10 m
Two men aluminum basket (L x W x H)	1,20x0,70x1,10 m
*One man fiberglass basket (L x W x H)	0,80x0,60x1,10 m
*Two men fiberglass basket (L x W x H)	1,20x0,60x1,10 m
*Two men fiberglass basket (L x W x H)	1,40x0,60x1,10 m
PRESSURES	
Max. pressure on the foot	5,84 kg/cm ²
Max. pressure on the tracks	0,28 kg/cm ²
Max. pressure in work with 4 outriggers opened	146,00 kg/cm ²
Max. pressure in work with 4 outriggers closed	213,00 kg/cm ²
Max. pressure in work with 2 outriggers opened and 2 outriggers closed	172,00 kg/cm ²

TRAVEL SPEED (KM/H)**	
Kubota Z902	Speed 1: 0,50 km/h Speed 2: 1,13 km/h Speed 3: 2,40 km/h
Auxiliary electric engine 110/230 V*	Speed 1: 0,36 km/h Speed 2: 0,36 km/h Speed 3: 0,61 km/h
Full Lithium version 48 V*	Speed 1: 0,37 km/h Speed 2: 0,75 km/h Speed 3: 1,57 km/h
POWERS	
Standard engines	Kubota D902-E4B diesel engine, 16.1 kW (21.6 HP), 3200 rpm
*Options engines	Auxiliary electric engine 110/230 V - 2.2 kW
	Auxiliary electric engine 380 V - 7.5 kW
	Full lithium version (G0901306 electric engine, 9 kW, 48 V + 200 Ah lithium batteries)
	Hybrid version (diesel engine + 200 Ah lithium batteries)
Fuel tank capacity	30 l
* Options	**with basket 1,40 x 0,70 x 1,10 m
** these data may vary depending on the accessories chosen	