



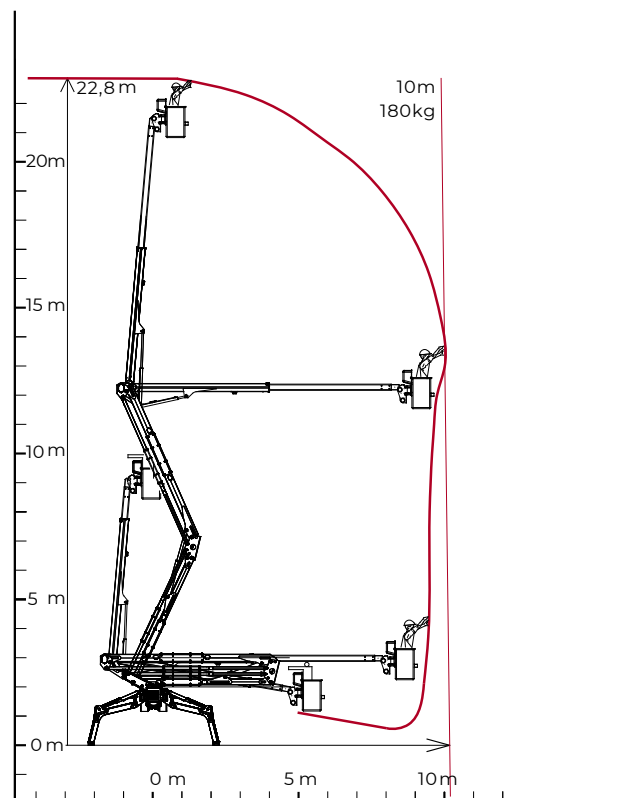
TECHNICAL SHEET

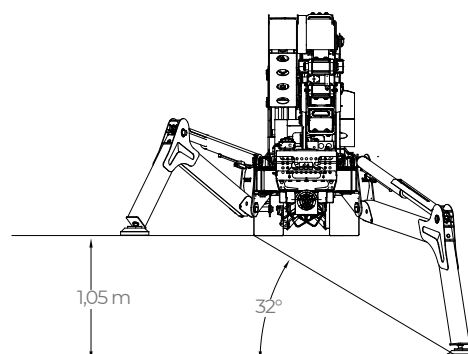
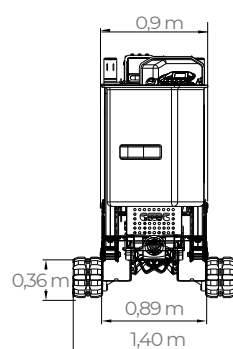
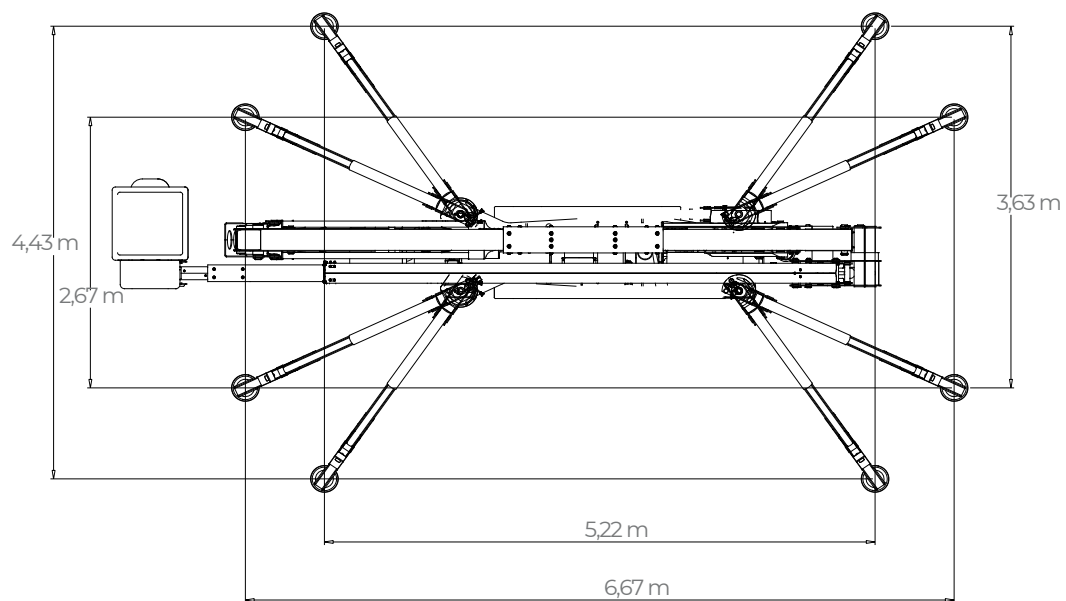
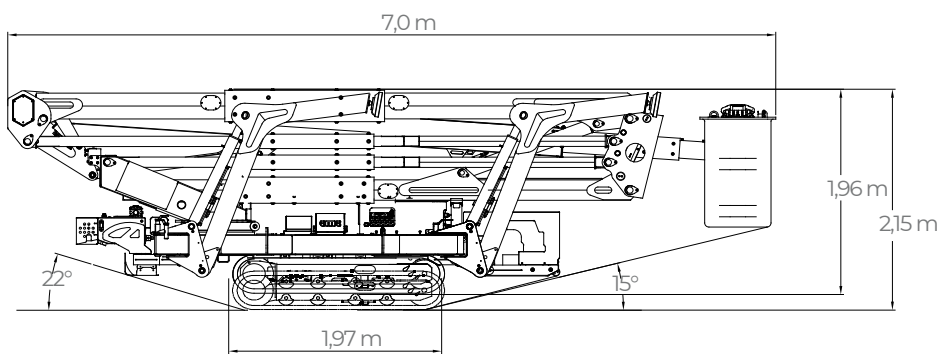
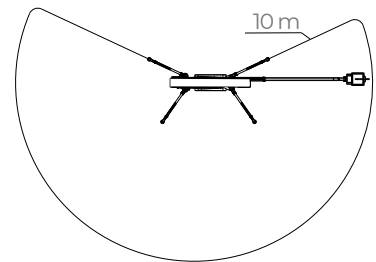
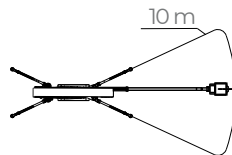
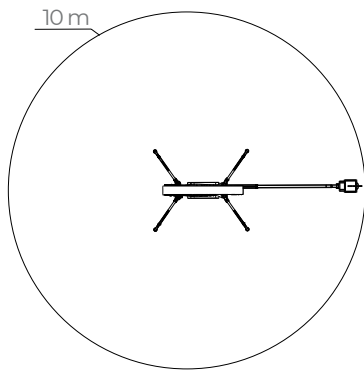
PERFORMANCE AND DIMENSIONS

Main features

Double pantograph geometric platform, with the widest outreach without limiting devices in its category. Electrically isolated up to 46kV, it allows it to work safely on or near high voltage lines. With its 23 meters of working height, its three areas of stabilization, the automatic leveling of the stabilizers, is able to operate at its best in any condition.

Max. working height	22,8 m
Max. outreach with 180 kg	10 m
Max. load in basket	180 kg
Basket dimensions	0,6 x 0,6 x 1,1 m
Basket rotation	+90°
Turret rotation	+/- 200° (400° continuous)
Total weight	3930 Kg





PERFORMANCE	
Max. working height	22,80 m
Max. working outreach	10,00 m (with 180 kg)
Max. basket capacity	180 kg
Turret rotation	+/-200° (tot. 400°)
Basket rotation	+/-90°
Max. ramp attack slope (basket side) with tracks closed/opened	16°/8° - 29%/14%
Max. ramp attack slope (engine side) with tracks closed/opened	7°/10° - 12%/18%
Max. longitudinal slope to travel	19° - 34%
DIMENSIONS	
Total lenght with basket bracket rotated	7,20m
Height in driving position (with tracks closed)	1,99 m
Height in driving position (with tracks opened)	2,15 m
Total width without basket	0,89 m
Outriggers plate Ø	0,18 m
Total weight (standard equipment)	3930 kg
BASKETS AVAILABLE	
One man fiberglass basket (L x W x H)	0,60x0,60x1,10
PRESSURES	
Max. pressure on the foot	9,03 kg/cm²
Max. pressure on the tracks	0,28 kg/cm²
Max. pressure in work with 4 outriggers opened	173,00 kg/m²
Max. pressure in work with 4 outriggers closed	225,00 kg/m²
Max. pressure in work with 2 outriggers opened and 2 outriggers closed	189,00 kg/m²
TRAVEL SPEED (KM/H)**	
Kubota Z902	Speed 1: 0,50 km/h Speed 2: 1,13 km/h Speed 3: 2,40 km/h
Auxiliary electric engine 110/230 V*	Speed 1: 0,36 km/h Speed 2: 0,36 km/h Speed 3: 0,61 km/h
Full Lithium version 48 V*	Speed 1: 0,37 km/h Speed 2: 0,75 km/h Speed 3: 1,57 km/h
POWERS	
Standard engines	Kubota D902-E4B diesel engine, 16.1 kW (21.6 HP), 3200 rpm
*Options engines	Auxiliary electric engine 120 V - 1.6 kW
Fuel tank capacity	30 l
* Options - ** these data may vary depending on the accessories chosen	